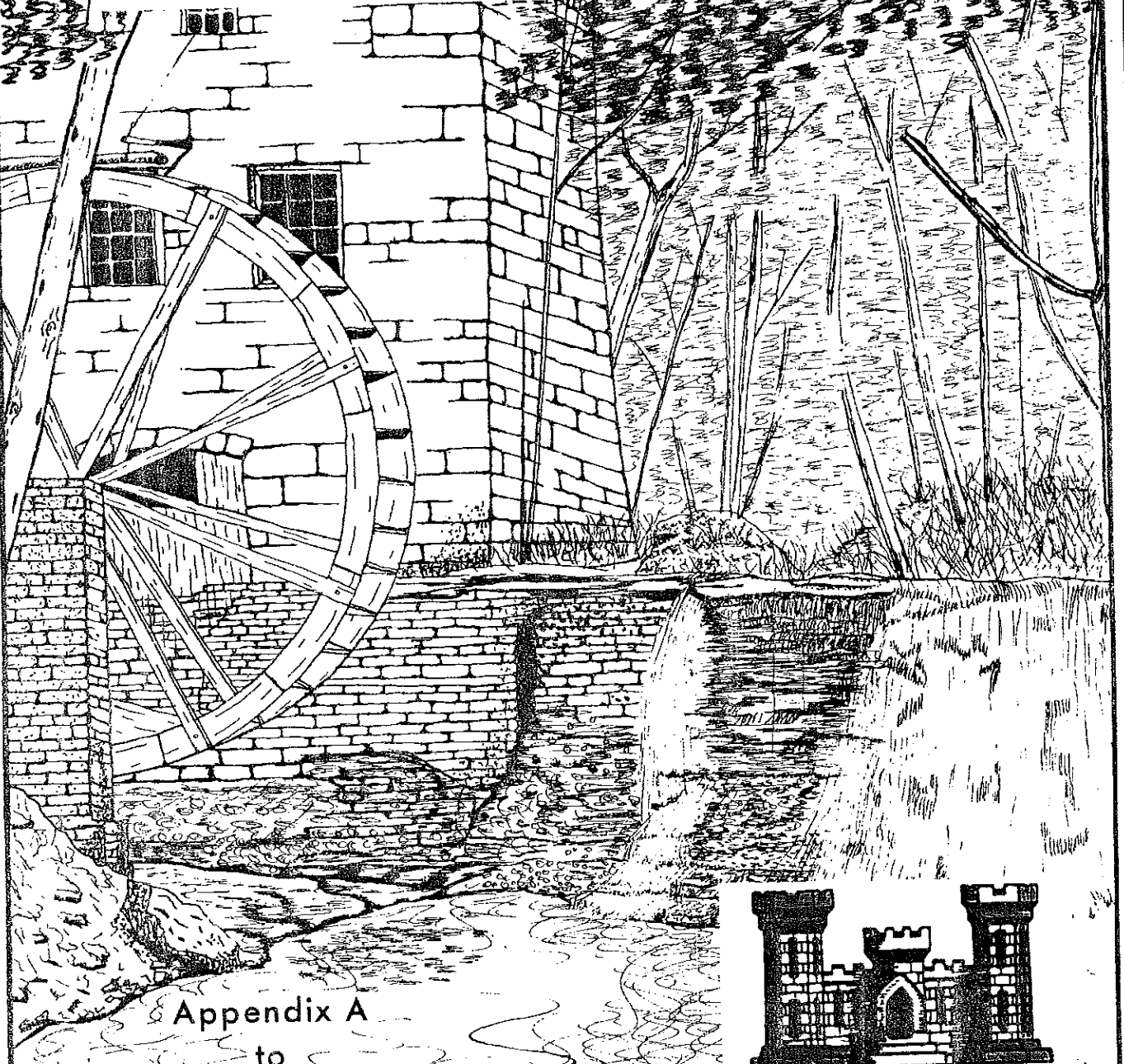


PLANNING DIVISION CENTRAL FILES  
PROJECT RESOURCES MANAGEMENT PLAN

NOLIN RIVER LAKE, KENTUCKY



Appendix A  
to  
Design Memorandum No. 8  
MASTER PLAN  
1974



U.S. ARMY  
CORPS OF ENGINEERS  
LOUISVILLE DISTRICT



DEPARTMENT OF THE ARMY  
LOUISVILLE DISTRICT CORPS OF ENGINEERS  
P. O. BOX 59  
LOUISVILLE, KENTUCKY 40201

17 November 1975

ORLOP-R

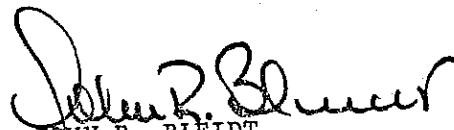
SUBJECT: Appendix A, The Project Resource Management Plan for Nolin  
River Lake, Kentucky

Division Engineer  
Ohio River Division  
ATTN: ORDCO-R

1. The Nolin River Lake Resource Management Plan is submitted in final form for review and approval.
2. A current project brochure is attached to the back cover for ready reference in reviewing this plan.

FOR THE DISTRICT ENGINEER:

1 Incl  
as (7)

  
JOHN R. BLEIDT  
Chief, Operations Division



Nolin River Lake, Kentucky  
Project Resource Management Plan  
Appendix A to the Master Plan

U.S. Army  
Engineer District, Louisville  
Corps of Engineers  
1975

Nolin River Lake, Kentucky  
Project Resource Management Plan  
Appendix A to the Master Plan

Paragraph	Table of Contents	Page
SECTION I - INTRODUCTION		
1-01	Authorization	1
1-02	Purpose	1
SECTION II - PROJECT DESCRIPTION		
2-01	Location	2
2-02	Scenic Quality	2
2-03	Geological and Archeological Features	2
2-04	Natural Resources	2
2-05	Historical Features	3
2-06	Educational and Cultural Aspects	3
SECTION III - PROJECT PURPOSES		
3-01	Operational Concept	4
3-02	Land Acquisition Policy	4
3-03	Recreational Concept	4
SECTION IV - EVALUATION OF EXISTING FACILITIES		
4-01	Public Use Areas	5
4-02	Maintenance Facilities	7
4-03	Storage Facilities	7
4-04	Office and Administrative Facilities	7
SECTION V - ADMINISTRATION AND MAINTENANCE		
5-01	Staffing and Organization of the Project	8
5-02	Administration of User Fees	8
5-03	Cooperative Activities with other Agencies	8
5-04	Ranger Activities	9
5-05	Law Enforcement	11
5-06	Safety	11
5-07	Concessionaire Activities	12
5-08	Encroachments	13
5-09	In-Service Training Program At Project	13
5-10	Visitor Education and Interpretation	13
5-11	Pest Control Program	14

Paragraph	Table of Contents (Con't)	Page
	SECTION VI - PLAN FOR DEVELOPMENT	
6-01	Change Since the Master Plan was Formulated	15
6-02	Future Use Requirements	

#### ATTACHMENTS

A	Outgrants
B	Recreation Area Information
C	Layouts of Public Use Areas
D	Layout of Maintenance Area
E	List of Major Equipment
F	Organization Charts
G	Third Party Leases

Nolin River Lake, Kentucky  
Project Resource Management Plan  
Appendix A to the Master Plan

SECTION I - INTRODUCTION

1-01. AUTHORIZATION. The Nolin River Lake is a unit in the General Comprehensive Flood Control Plan for the Ohio River Basin, adopted by the Flood Control Act approved 28 June 1938, Public Law No. 761, 75th Congress 3rd Session. The development of flood control reservoir areas for recreational purposes was authorized by Section 4 of the Flood Control Act approved 22 December 1944, as amended by the Flood Control Act approved 24 July 1946 (Public Law 526, 79th Congress, 2nd Session) (HR 6597). The amendments also authorize use of project lands for the implementation, operation and management of a fish and wildlife program. This program, known as the wildlife management plan, is now in effect.

1-02. PURPOSE. The purpose of this plan is to present the Resource Manager's concept of managing the project resources at a multiple purpose lake. A reappraisal of the resources, facilities, and operational characteristics of Nolin River Lake will be made. The plan will indicate the magnitude and diversity of public use and expected future trends. This appendix will describe the lakes present development and its capacity to accomodate present use along with areas of possible future development and anticipated use.

## SECTION II - PROJECT DESCRIPTION

2-01. LOCATION. Nolin River Lake is located in Edmonson, Grayson and Hart counties in south central Kentucky, approximately 70 air miles southwest of Louisville, Kentucky. The dam site is in Edmonson County, 7.8 miles from the mouth of the Nolin River, and 9.6 miles upstream from Brownsville, Lock 6 Green River. The project is accessible via State Route 88, 259, and 728. Interstate 65 and the Western Kentucky Parkway pass within 12 miles of the project.

2-02. SCENIC QUALITY. Most of the land of the Nolin River watershed ranges from low rolling hills to steep, wooded slopes. Subsurface drainage has created limestone sinks and a karst terrain in much of the area. The principal surface characteristic of the Nolin Basin is, in general, a rugged topography with well-defined drainage. The majority of the Corps owned shoreline consists of the deciduous type tree (mostly oak and hickory) that produces a variety of colors during the fall.

2-03. GEOLOGICAL AND ARCHEOLOGICAL FEATURES. Nolin Lake is located in the western coal field and the Pennyroyal Physiographic areas of Kentucky. The valleys in the Nolin Lake area are generally well entrenched with steep wooded side slopes. The soils are of general type, Zanesville, Wellston, Gilpin and Weikert, sandstone and limestone outcrops are prevalent.

No organized archeological expeditions have been made around Nolin Lake, although visitors may find Indian relics and arrowheads around the project. A local resident found an Indian skeleton in the vicinity of Dog Creek.

2-04. NATURAL RESOURCES. The natural resources of this area consist of rich soils and timber, with lesser amounts of gas, coal, and oil. The community pattern of the land is agricultural. The cleared land along the hillsides and slopes is best suited for grazing. However, small areas are tilled on a crop rotation basis. Burley tobacco being the leading cash crop. Other crops include corn, sorghum, beans, hay, and some small grain. Cattle and hogs are in the chief kinds of livestock raised and marketed.

2-05. HISTORICAL FEATURES. The lake is in Edmonson, Grayson and Hart counties, which were established in the early 1800's. The most prominent historical landmark on the lake is an iron furnace. The remains of which are visible during winter pool elevation, and are located adjacent to the Moutardier campground. This furnace was built in 1844, and furnished cannon balls for the Southern Army during the Civil War. Wheeler's Mill and Millerstown have the remains of old mill dams used in the process of crushing grain.

2-06. EDUCATIONAL AND CULTURAL ASPECTS. The lake area and surrounding area is a source of study to students and visitors who are interested in the natural sciences, conservation, geology, fish and wildlife, recreation, and water quality.

Western Kentucky University obtained a Federal grant to record data from the tailwater area, and maintained these studies for several years. Boy Scout groups from Louisville and vicinity use the more remote areas for camping and canoe trips. Geology students from Ohio University have studied the cuts through which recent roads have been constructed. University students have run surveys in the lake campgrounds, along with using current visitation data for projects and reports. The large land and water area available at Nolin Lake is a good source of educational and cultural information.



### SECTION III - PROJECT PURPOSES

3-01. OPERATIONAL CONCEPT. Nolin Lake is operated as a unit in the system of lakes in the Green River Basin in the interest of flood control, effecting significant reductions in damaging stages downstream along the Nolin and Green Rivers, with some modification to high stages along the lower Ohio and Mississippi Rivers. Under normal conditions, the lake maintains a minimum or winter pool elevation of 490.00 feet m.s.l., covering 2,890 acres with water. The recreational or summer pool elevation is 515.00 feet m.s.l., and covers 5,800 acres with water. Normal gate settings or discharge rates as well as, those for flood conditions, are supplied by the Hydraulics Branch.

3-02. LAND ACQUISITION POLICY. Land acquisition for Nolin Lake was acquired under the Eisenhower Policy. This policy acquired 13,414 acres of fee land. Easements were acquired from the fee line to the 566.00 ft. elevation for additional water storage. Easement area consists of 4,631 acres. 7,614 acres of fee land are above seasonal pool.

3-03. RECREATIONAL CONCEPT. The primary purpose of the Nolin River Lake was to facilitate flood control. A long range plan was devised to develop the recreational resources of the project to their fullest capabilities. Visitation and recreational use has increased and user trends have changed making it necessary to augment the recreational facilities.

Management of our recreation resource required coordination of all project purposes in order to meet the needs and increasing demands of the public in their utilization of the project resources.

Visitors to Nolin Lake are divided into three groups. The first group, those interested in day-use, will remain on the project for 1 to 8 hours. The second group are campers who visit the project several times a year, and stay from 3 to 14 days. The third group are those who have summer cottages and camps along the edge of the project. The second and third groups are increasing while the first has remained stable. All groups are interested in water oriented sports and activities.

Public use of the project has been encouraged. The new shoreline management plan should help sustain utilization of the recreation resources, but will also protect our natural environment and preserve its resources. Any further outgrants or permits will be granted only if they concur with the shoreline management plan.

#### SECTION IV - EVALUATION OF EXISTING FACILITIES

4-01. PUBLIC USE AREAS. Public use areas at Nolin River Lake consist of six developed recreational sites. A seventh area is planned. The seven recreation areas contain 1,023 acres. Two privately leased concessions contain 33.7 acres. Visitation has increased from 202,000 in 1963 to 533,000 in 1974.

Recreational use includes such activities as fishing, swimming, picnicking, hiking, boating, water-skiing, camping, and sight seeing. Presently, about sixty percent of our facilities are designed for day-use, the remainder must accommodate an increasing number of campers.

Future development will include facilities for the extended stay group, with priority being given those areas with the heaviest use.

a. Site 1. The Dam site includes the operation facilities and office, tailwater area, and a day-use ramp area. Tours of the operational tower are conducted by guides. The tailwater area contains a 14-unit picnic area, overlook, comfort stations, and a 50-unit gravel parking area. Excellent bank fishing is found at this site. The ramp area contains flush-type comfort stations, launching ramp, and a 76-unit paved parking area. Future plans call for picnic areas and an overlook. The Dam area contains 73 acres.

b. Site 2. Dickey's Mill is presently undeveloped. When developed, this area will contain 125 acres.

c. Site 3. Iberia offers the greatest problem for recreational development. There is a deep road cut which isolates half the site and leaves the chances of successfully developing the site small. The area is presently used by fishermen and day-use groups. The site contains a 2-lane launching ramp and turnaround, comfort station, and 2 parking lots to accommodate 74 cars.

d. Site 4. Dog Creek is relatively flat. It is proposed that this area will contain a 200-unit campsite, necessary water and sewage facilities, a sanitary dump station, and a single controlled entrance. This area is presently used by fishermen and day-use groups. Primitive camping is permitted. The site now contains a 2-lane launching ramp and turnaround, a 60-car and 20 trailer parking area, a comfort station, and 15 picnic tables.

e. Site 5. Wax offers an excellent opportunity for development. The area around the ramp has been developed to accomodate picnicking and day-use groups. A 46-unit campground fee area has been constructed across Hwy 88, opposite the ramp, and has been augmented with an over-load area. Sewage treatment and water facilities have been installed, along with flush-type comfort stations. The parking lot has been enlarged to 112 units. The presence of a marina concession adds to the desirability and use of this site. Presently, Wax contains a marina, motel and restaurant.

f. Site 6. Moutardier is the largest public use area on Nolin Lake. Effective use of the entire area is limited due to its topography. The ultimate development of this site is planned to include 200 camping units and 50 picnic units, plus the necessary comfort station and wash house facilities, a 181-car and trailer parking area, and 96-ft. launching ramp with turnaround. This site presently has a 4-lane launching ramp with turnaround and a 95 car and trailer parking lot. It presently has the facilities which comprise a Class "A" campground with 162 units, and 10 picnic sites. An overflow area is available in the immediate area on agreement with the Moutardier Concessionaire. The concession facilities include a marina, dry storage shed, grocery store and nine rental cabins. During the summer, the major percentage of the visitors who utilize this site are campers who also engage in fishing and water-oriented sports. During the winter months, it is a favorite launching site for fishermen. The area provides 150 primitive camping sites.

g. Site 7. Brier Creek is a site in which approximately one-half of the area is suited for recreational development. Corps plan for this site propose a 60-ft. wide 2 lane launching ramp, 95 car and trailer parking lot, and a 195-unit campground with suitable water and comfort station facilities. Presently, the site contains a 2-lane launching ramp with turnaround, a 54-car and trailer parking lot, comfort station, and water facilities. A 25-30 unit tent and campsite has also been completed. Visitors utilizing this site engage in camping, picnicing and all water-oriented sports.

4-02. MAINTENANCE FACILITIES. The maintenance building at Nolin Lake's administrative site is 30' x 64', constructed of concrete blocks. The building is divided into two shop areas. The small shop is 15' x 30' and contains a 6' x 15' paint room, with 16 - 3' x 6' shelves. The shop itself contains a 12' work bench with three drawers and four cabinets. A 10' overhanging door is the sole means of access. The large shop is 30' x 49' and contains a 12' work bench. This shop has a total of 9 - 5" x 20" drawers, 6 - 24" x 72" cabinets and 31 - 24" x 32" cabinets. It also has two 12' wide overhanging doors located on opposite sides of the building. Two 3' wide doors are also located in this shop. Both shops are heated electrically and have adequate fluorescent lighting. The building however, is in need of restroom facilities, which is in future planning. An inclosure located near the maintenance building contains a 4' x 16' concrete oil shed and a 1,000-gallon gas tank. A sketch of the maintenance facilities, plus a list of the major equipment is included as Attachment "E".

4-03. STORAGE FACILITIES. The storage area is located at the administrative site. It presently includes a 22' x 96' storage shed. The shed is a pole-type structure, constructed of squared timbers and inclosed on three sides with galvanized metal. A 22' x 22' section is inclosed and has a 4" thick concrete floor. An 8' wide overhanging door and a 3' wide standard door are the only entrances. The remainder of the shed contains six bays. The area around the storage shed is graveled and used for outside storage. The road leading to the storage area is blocked by a 20-ft. wide double gate. A 6' high chain link fence surrounding the entire area is planned.

4-04. OFFICE & ADMINISTRATIVE FACILITIES. The office building at Nolin Lake's administrative site was originally a construction office. This office was recently enlarged to 66-ft. long x 24-ft. wide. It contains a 12' x 24' reception room, a 14' x 11' Manager's office, a 24' x 20' conference and Ranger-Maintenance work room, a 9' x 11' water quality laboratory and office, a 11' x 13' utility room, and has had an outside entrance constructed. An 8' x 8' storage room will soon be available when the new water system is completed. A 6' x 5' womens restroom, and a 6' x 5' mens restroom, and a 11' x 16' concrete block building has been constructed at the rear of the office to house the new water tank. The ceiling and new addition have been recently insulated, and the office is now heated with electricity, and cooled by four 18,000 btu air conditioners. Two 47' x 27' residential houses are situated at the administrative site. The Maintenance Mechanic Foreman and the WG-09 Maintenance Mechanic are required to occupy these residences.

## SECTION V - ADMINISTRATION AND MAINTENANCE

5-01. STAFFING AND ORGANIZATION OF THE PROJECT. Nolin River Lake staffing (Figure 1) provides a full time GS-09 Resource Manager, two GS-07 Park Rangers, one permanent WS-07 Maintenance Mechanic Foreman, one permanent WG-09 Maintenance Mechanic, one permanent WG-07 Maintenance Mechanic, one permanent WG-10 Heavy Equipment Operator and two permanent WG-05 Maintenance Mechanic Helpers. During the recreation season, 20 to 25 seasonal employees are utilized as temporary rangers, fee collectors and laborers. Service and construction contracts have been frequently used in the past few years, reducing the number of seasonal employees. Real Estate Division personnel conduct annual compliance and utilization inspections in coordination with the Area Manager staff and the Resource Manager.

5-02. ADMINISTRATION OF USER FEES. Under Section 210, Public Law 90-483 of the 90th Congress, Moutardier campground will be sufficiently developed to charge the user fee. The method of collection is by means of a toll house where attendants are on duty 7 days a week, 24 hours a day, from Memorial Day weekend thru Labor Day weekend. Visitors are given a choice of sites on first-come first-serve basis. Visitors are required to pay in advance. No reservations of sites prior to occupancy is allowed. When the campground is full, additional visitors are either directed to other areas, or permitted to an overflow area. No charge is made for use of the overflow area. Wax and Brier Creek have had user fee's charged in the past. Wax campground used the toll house method of collection, and Brier Creek used the honor system.

5-03. COOPERATIVE ACTIVITIES WITH OTHER AGENCIES. a. The policy is to cooperate with other federal, state, and county agencies concerning Nolin Lake in all possible ways.

b. Federal agencies with which contact is maintained are: U.S. Weather Bureau, F.B.I., U.S. Geological Survey, and the U.S. Park Service. Nolin Lake furnishes the Weather Bureau at Evansville, Indiana with daily precipitation, river stages, pool and tailwater elevations. The F.B.I. office at Bowling Green, Kentucky is notified in cases of major theft of government property, or vandalism. The U.S. Geological Survey has recently re-mapped the area in the vicinity of Nolin Lake. Any requested assistance was furnished. Contact with the National Park Service has been limited to schools and training sessions in which subject matter would be of interest to both agencies. In the Spring of 1975 the Park Service held an Interpretive Workshop at Mammoth Cave, Kentucky. Two Nolin River Lake employees were in attendance: A Park Ranger and a Seasonal Interpreter.

c. State agencies include the Kentucky State Police, Kentucky Division of Boating, Kentucky Department of Fish and Wildlife, plus the Kentucky Parks Department which has been described in the Public Use Section. A good working relationship is maintained with both the State Troopers assigned to the counties in which Nolin Lake is located, and with the Division of Boating Officer who is responsible for Nolin Lake. The Kentucky Department of Fish and Wildlife have a license with the Corps for approximately 11,263 acres of land and water in the Nolin Lake area for fish and wildlife management purposes. One game biologist manages six subleased areas containing a total of 248 acres of Land improved for food & cover for small game species. See Attachment "G" for a list of these third party leases. Two game wardens strictly enforce local hunting and fishing laws and sometimes assist Corps personnel in locating missing persons.

d. The county Sheriff's Department and Health Department of Edmonson, Hart and Grayson continue to aid Corps of Engineers personnel in their respective fields. Reservoir personnel are required to depend on the three local Sheriff's Departments in maintaining law and order within their jurisdictions on Nolin Lake. The Corps is dependent upon the three county Health Departments, with the aid of the recently passed legislation pertaining to pollution and sewerage, to control the sources of pollution which might arise on easement land. County Health Department officials also aid Corps personnel by running frequent tests on water samples from our main recreation sites.

5-04. RANGER ACTIVITIES. a. The Park Ranger on Nolin Lake is responsible for a wide variety of duties. He receives verbal and written assignments from the Resource Manager and initial instructions as to the scope of his responsibility and extent of his authority. Within this framework, the Park Ranger performs his duties on his own initiative and, for the most part, alone.

b. Duties of the Park Ranger include, but are not limited to:

(1) Inspection of fee and easement lands, concessionaire leases, permits, outgrants and outlying public use facilities for compliance with current regulations and policy.

(2) Maintains traffic counter system.

(3) Serves as Safety Officer on assigned month.

(4) Instructs applicants and issues permits to cut and clear dead snags which are potential hazards, and to mow and clear small brush to help control chiggers, ticks, and poisonous snakes. Issues clearing and burning permits and instructs the applicants in the proper procedures.

(5) Participates in peak day counts, visitation surveys, tree planting, and emergency fire and flood duties.

(6) Inspects applications for dock permits and various outgrant licenses, and makes recommendations to the Resource Manager.

(7) Surveys and relocates fee and easement lines as required.

(8) Patrols the lake during periods of high visitation and advises the boating public in safety practices and boating laws.

(9) Investigates and reports all accidents, injuries, deaths, disturbances, thefts, harrassment or vandalism occurring on project land, and in some cases, adjoining lands.

c. A large percentage of the Park Ranger's time is spent working with adjoining lot or land owners. He informs this portion of the public on regulations and policy. He corrects minor violations, either by requiring removal, or in some cases, by obtaining the application for permit or license. An increasing percentage of the Ranger's duties are being directed toward weekends and the day-use visitors who occupy the developed campgrounds and shorelines. Consequently, the Park Ranger works an evening shift on weekends during the recreation season. In addition, temporary Rangers also work a late evening shift during the recreation season, patrolling the recreation areas in an effort to control vandalism and rowdyism. As proposed public use areas are developed, a corresponding amount of Ranger time will be directed to these areas. Use of the citation authority has discouraged many parking problems and cases of destruction of public property.

5-05. LAW ENFORCEMENT. a. Presently all project lands and water fall under the jurisdiction of the State of Kentucky and local law enforcement agencies. During 1970-71, a security plan was established at the lake during holiday weekends. All field employees were alerted to duty status during holiday weekends. Tours of duty and change of shifts were set up to assure maximum coverage of recreation areas from 7:00 P.M. to 3:00 A.M. This security plan was co-ordinated with state and county enforcement officers to assure maximum effectiveness. The state health and conservation officers also furnish law enforcement in their related fields.

b. The recently enacted Citation Program, which is authorized by Section 234 of the Flood Control Act of 1970, will give designated Corps personnel citation authority for those laws covered by Chapter III, Title 36 of the Federal Code of Regulations. Signs and notifications have been posted to advise the public that the citation program is in effect on Nolin Lake. Special efforts are being made to insure that state and local law enforcement officers understand that the citation program does not limit their authority or responsibility on Nolin Lake.

5-06. SAFETY. Safe working conditions are continuously stressed in all phases of operation on Nolin Lake. Safety meetings are held each Monday morning, with emphasis placed on the possible work hazards for the coming week. The responsibility of acting as Safety Officer is rotated monthly. All required safety equipment and practices are used and observed. "Safe Boating Week" is observed by increased activity of personnel who caution the public against unsafe boating practices and by displaying large "Safe Boating" banners at prominent sites. During the boating season, the project safety patrol boat is operated by a uniformed Ranger who contacts boaters and swimmers who are engaging in unsafe acts or operating unsafe equipment. The above activities will be increased as the visitation and work load increases. Any new developments in safety equipment or practices will be immediately incorporated into the over-all safety plan. It has been 4,000 days since the last lost time accident. Safety personnel visit and inspect the project regularly.



5-07. CONCESSIONAIRE ACTIVITIES. a. Two concessionaires are in operation on Nolin Lake. They are located at Wax, Site 5, and Moutardier, Site 7.

b. The Wax Concession is leased to John W. Bland, Sonora, Kentucky, effective on 1 April 1965 and will expire on 31 March 1990. Mr. Blands wife administers the restaurant and motel with the aid of three seasonal employees. The marina is administered by Mr. Bland and two of his sons. Two year-round and three seasonal dock attendants assist in running the marina. The lease grants the right to use a parcel of land containing 4.5 acres for the conduct of business to include boat dock, motel, and pertinent facilities for the general use of the public. Wax Marina contains 30 open slips and 52 covered slips, a sales building with 700-800 sq. ft. of floor space, and a fuel barge. There are 75 off-shore rental mooring buoys, 40 rental boats, and 29 rental motors available to the public. The motel contains 12 units and the restaurant will seat 40 people. The Wax Concession is located off KY. Hwy. 88 in Grayson County, approximately 21 miles upstream from the Dam. See Attachment C<sup>2</sup> for a layout of this Concession.

c. The Moutardier Concession is leased to Charles J. Shuster, Annetta, Kentucky. The effective date of this lease is 1 January 1966 to 31 December 1990. Presently, Mr. Shuster holds the lease in his name. He has had two previous partners. Two seasonal women are employed to run the grocery, clean cabins, and keep records. One full time and three seasonal dock attendants are employed. The lease grants the right to use a parcel of land containing 35 acres for the conduct of business to include boat dock, cabins, and other pertinent facilities for the general use of the public. Moutardier Marina contains 85 open slips, a sales building containing approximately 11,000-12,000 sq. ft. of floor space, and a fuel barge. There are 81 off-shore rental mooring buoys, 29 rental boats, and 17 rental motors available to the public. A 20' x 85' dry storage shed, nine efficiency cabins (each with 333 sq. ft. of floor space), and a grocery (with 1,500 sq. ft. of floor space) are also operated by the Concessionaire. The Moutardier Concession is located two miles southeast of KY. Hwy. 259, in Edmonson County, approximately 7½ miles upstream from the Dam. Visitation to the access site at Moutardier is second only to the visitation to Wax. See Attachment C<sup>3</sup> for the layout of this Concession.

5-08. ENCROACHMENTS. a. Nolin River Lake has two frequent types of encroachments. One type is an encroachment on fee land and the other is an encroachment on easement land. Encroachments on fee land normally involve unauthorized clearing and burning of trees and vegetation and the construction of unauthorized structures and facilities. Encroachments on easement land usually concern the construction of permanent structures below the easement elevation of 566.00 ft. m.s.l. Outside toilets, septic tanks and lateral septic tank lines, along with floatable objects are major pollutants on easement land.

b. Any encroachment discovered during regular patrols by Resource Management personnel is resolved in the field if possible. Records indicate that 75% of the total encroachments are resolved in this manner. If it is not possible or feasible to take immediate action in the field, a formal process is initiated by Resource Management personnel, through channels, to the Real Estate Division. As a last resort, legal action by the U.S. Attorney can be requested. In some cases in the past, court action has been taken and damage values have been assessed against the violators.

5-09. IN-SERVICE TRAINING PROGRAM AT PROJECT. On-the-job training in all aspects of the operation and administration of Nolin River Lake is the responsibility of the Resource Manager and the Chief of Maintenance. Formal training is scheduled by the District Office. Some formal training recently given project personnel includes the following: Water and Sewage Plant Operation, Radiological Instrumentation, Report Writing, Discipline (CPR-41-B-7), Recognition of Employees (41B Series), Selection and Utilization of Personnel (41B), Equal Employment Opportunity (41B), Position and Pay Management (41B), Labor Management Relations (CPR-41-B-14), Supervision and Group Performance, Counselling and Motivating Employees, Fundamentals of Leadership, Waste Disposal Methods, Enforcement Seminar (Citation Program), and Safe Boating Practices and Equipment. A District-wide Reservoir Management Conference is conducted each year by District Office personnel and attended by all Resource Managers and Rangers. A Resource Manager and Maintenance Mechanic Foreman meeting is scheduled.

5-10. VISITOR EDUCATION AND INTERPRETATION. Nolin Lake has rustic-type bulletin boards at each public access site. Site and project maps and operational literature for the boards are furnished by the Louisville District Office. Project brochures and other informative literature are provided at marinas, toll houses, local groceries and post offices. When requested, guided tours

of the operational tower are provided by project personnel. Information, speeches, and talks with visual aids are available to schools, churches, civic groups and other federal, state and local agencies. Nolin Lake's personnel provide information to the public whenever possible in order to promote good public relations.

5-11. PEST CONTROL PROGRAM. Nolin Lake is relatively free of pests. Mice are a problem in storage areas and minor termite damage has occurred. D-Con rodent poison is used for control of mice and Chlordane-8 is used for termite control. The second maintenance man (WG-09 Maintenance Mechanic) at Nolin Lake is a licensed pesticide operator.

## SECTION VI - PLAN FOR DEVELOPMENT

6-01. CHANGES SINCE THE MASTER PLAN WAS FORMULATED. The first construction design Memo No. 8-B-(C-1), part of the Master Plan which was published in March, 1964, has been replaced by Public Use Plan Design Memorandum No. 16, published in 1971. The current plan does not change the areas selected to be developed. The plan does make minor changes on road locations within specific areas.

Site 1, Dam Site. Recreation development has been approved for the Dam area. Approximately one-half of the planned facilities have been constructed, with work still in progress. D.M. 16 has relocated some facilities and increased others.

Site 2, Dickey's Mill. Funds for recreational development have not been approved. D.M. 16 has relocated some facilities and specifically described others.

Site 3, Iberia. Funds for the recreational development have been approved. D.M. 16 has changed this site from a proposed camping area to a day-use area which is approximately 90% complete.

Site 4, Dog Creek. Funds for the recreational development have been approved. D.M. 16 has made minor changes in road systems and specifically describes and increases other facilities. Approximately 20% of the facilities have been constructed.

Site 5, Wax. Funds for recreational development have been approved. D.M. 16 has made minor changes in the overall layout and has specifically described the type of facilities to be constructed.

Site 7, Moutardier. Funds for recreational development have been approved. D.M. 16 has made minor changes in the overall layout, and has specifically described future facilities. Approximately 50% of the proposed facilities have been constructed.

Site 8, Brier Creek. Funds for recreation development have been approved. D.M. 16 has relocated about one-half the proposed facilities. Approximately 20% of the proposed facilities have been constructed.

6-02. FUTURE USE REQUIREMENTS. Construction of facilities as set forth in D.M. 16 (1971) should adequately provide for future use at Nolin Lake. However, construction should be underway at this time on many facilities, if they are to be completed by the target dates given in D.M. 16.

### LIST OF OUTGRANTS

1. Commonwealth of Kentucky Department of Parks, (Long Term Lease).
2. Department of Fish and Wildlife Resources, 11,263 acres, 25 year lease, Corps.
3. Charles Shuster, 25 year lease, concessionaire, Corps.
4. William Bland, 25 year lease, concessionaire, Corps.
5. Electric Light Line and/or Steps, license individual, 26 each, 5 year, Corps.
6. Launching Ramp, license public, 15 each, 5 year, Corps.
7. Waterline, license domestic, 12 each, 5 year, Corps.
8. Boat Dock Permits, community permit, 47 each, 5 year, Corps.
9. Land Outgrants, under re-monumentation of fee line, 8 each, Corps.
10. Cable Car, license individual, 1 each, 5 year, Corps.
11. Telephone Line right of way, 2 each, 50 years, Corps.
12. Electric Line right of way, 7 each, 50 years, Corps.
13. Letters of No Objection, indefinite and perpetual, 38 each, Corps.

## RECREATION AREA INFORMATION

### DAM AREA - TAILWATER AREA

1. 100 ft. of paved road.
2. 1,036 ft. of gravel road.
3. 29,583 sq. ft. of gravel parking area.
4. 1 comfort station (pit-type).
5. Information signs.
6. 8 picnic tables.
7. 3 trash cans.

### DAM AREA - RAMP

1. 284 ft. of paved road.
2. 32,000 sq. ft. of paved parking area.
3. 1 4-lane boat launching ramp.
4. 1 loading dock.
5. 1 (not complete) comfort station (flush-type).
6. Potable water (not complete).
7. Information signs.
8. 4 trash cans.

### IBERIA SITE

1. 21,480 ft. of paved road.
2. 13,680 sq. ft. paved parking area.
3. 1 2-lane boat launching ramp.
4. 1 loading dock.
5. 1 comfort station (pit-type).
6. 1 bulletin board.
7. Information signs.
8. 13 trash cans.

### DOG CREEK SITE

1. 638 ft. of paved road.
2. 782 ft. gravel road.
3. 25,600 sq. ft. paved parking area.
4. 1 2-lane boat launching ramp.
5. 1 comfort station (pit-type).
6. 1 comfort station (flush-type).
7. 1 bulletin board.
8. Information signs.
9. 8 trash cans.
10. Unlimited camping sites.

#### WAX SITE

1. 597 ft. of paved road.
2. 3,388 ft. of gravel road.
3. 24,765 sq. ft. of paved parking area.
4. 21,240 sq. ft. of gravel parking area.
5. 1 2-lane boat launching ramp.
6. 1 comfort station (pit-type).
7. 1 comfort station (flush-type) not complete.
8. Potable water.
9. Water treatment plant (not complete).
10. Marina with concession.
11. Bulletin board.
12. Information signs.
13. 16 picnic tables.
14. 60 grills.
15. 60 trash cans.
16. 46 camp sites.
17. Concessionaire lodging and restaurant.

#### MOUTARDIER SITE

1. 13,365 ft. of paved road.
2. 3,115 ft. of gravel road.
3. 28,650 sq. ft. paved parking area.
4. 1 4-lane boat launching ramp.
5. 1 loading dock.
6. 8 comfort stations (pit-type).
7. 2 comfort stations (flush-type).
8. 1 bath house.
9. Potable water.
10. 2 sewage disposal pits.
11. Marina with concession area.
12. 2 bulletin boards.
13. Information signs.
14. 4 picnic tables.
15. 176 grills.
16. 186 trash cans.
17. 172 camp sites.
18. Concessionaire lodging.

BRIER CREEK SITE

1. 1,134 ft. paved road.
2. 1,635 ft. gravel road.
3. 32,000 sq. ft. paved parking area.
4. 1 2-lane boat launching ramp.
5. 1 loading dock.
6. 1 comfort station (pit-type).
7. Potable water
8. 1 bulletin board.
9. Information signs.
10. 15 picnic tables.
11. 6 grills.
12. 20 trash cans.
13. 15 unlimited campsites.



YEARS	1969	1970	1971	1972	1973	1974
SITES						
1	24,200	25,100	24,000	22,600	47,700	72,620
2						
3	31,100	32,200	34,600	36,400	47,400	29,739
4	24,200	25,100	29,400	32,600	29,100	27,413
5	102,600	105,500	115,600	122,800	127,800	167,124
6					28,400	54,399
7	90,200	93,400	101,000	105,500	166,800	103,842
8	32,200	33,300	40,100	44,200	39,100	32,798
*9	9,000	9,300	11,400	6,800	11,900	14,313
*10	4,500	4,600	4,700	3,600	4,600	8,142
*11	28,000	29,500	31,700	29,600	29,900	29,058
MARINA						
TOTAL:	346,000	358,000	392,500	404,100	532,700	534,438

Figure 1.

The increase in 1974 despite the energy crisis is due to the project proximity to a large metropolitan area. Another increase is anticipated in 1975.

\*Areas used by local people.  
Counters were installed to check actual usage.

COMMENTS:

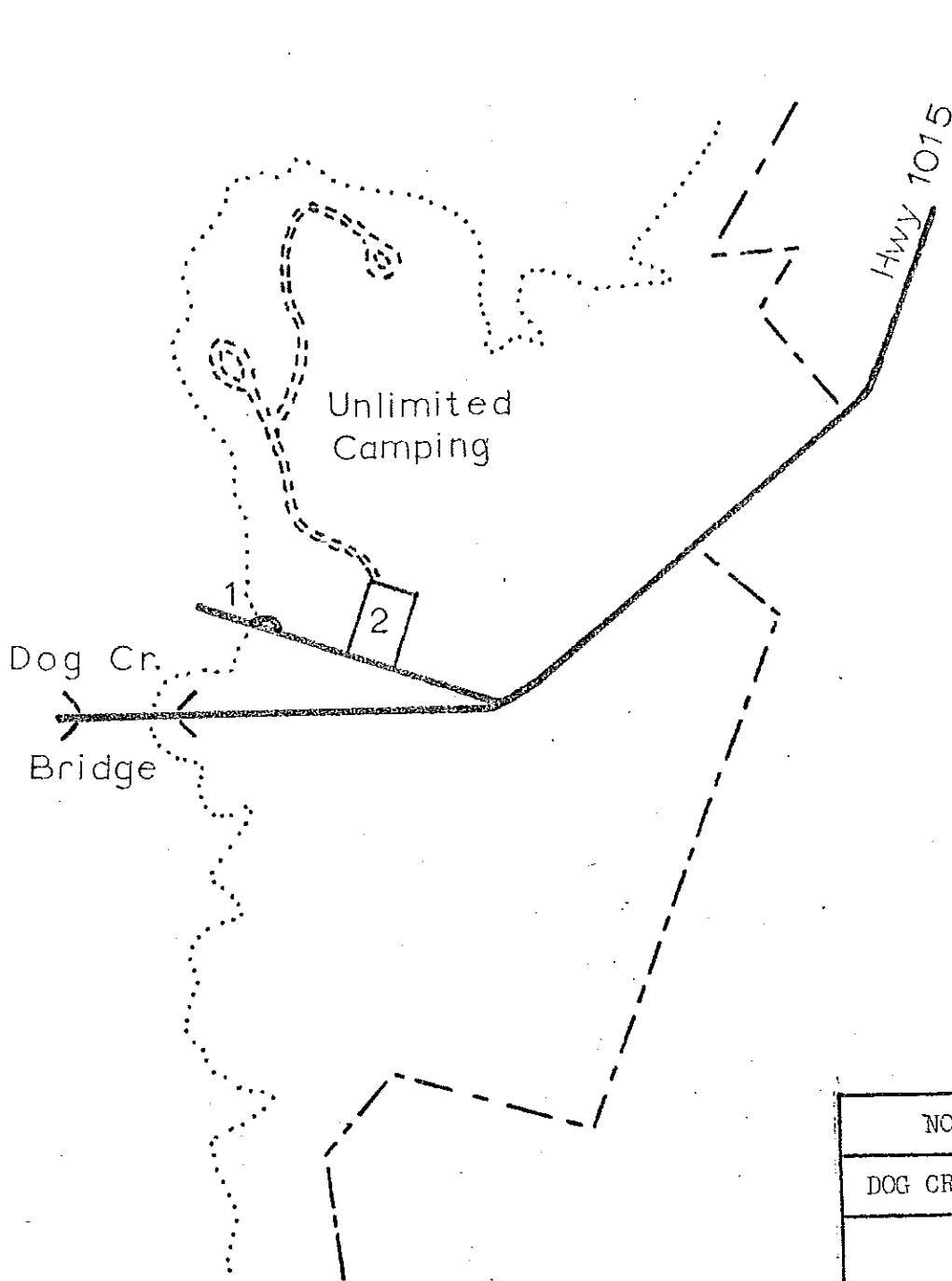
Site 1&6 - - Dam Area  
Site 3 - - - Iberia  
Site 4 - - - Dog Creek  
Site 5 - - - Wax  
Site 7 - - - Moutardier  
Site 8 - - - Brier Creek  
Site 9 - - - Edmonson County  
Site 10- - - Grayson County  
Site 11- - - Ponderosa

LOUISVILLE DISTRICT

U.S. Army Corps of Engineers  
Nolin River Lake  
Green River Area

VISITATION

1975



NOLIN RIVER LAKE

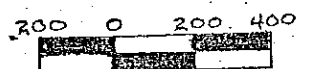
DOG CREEK LAYOUT-SITE 4

LEGEND

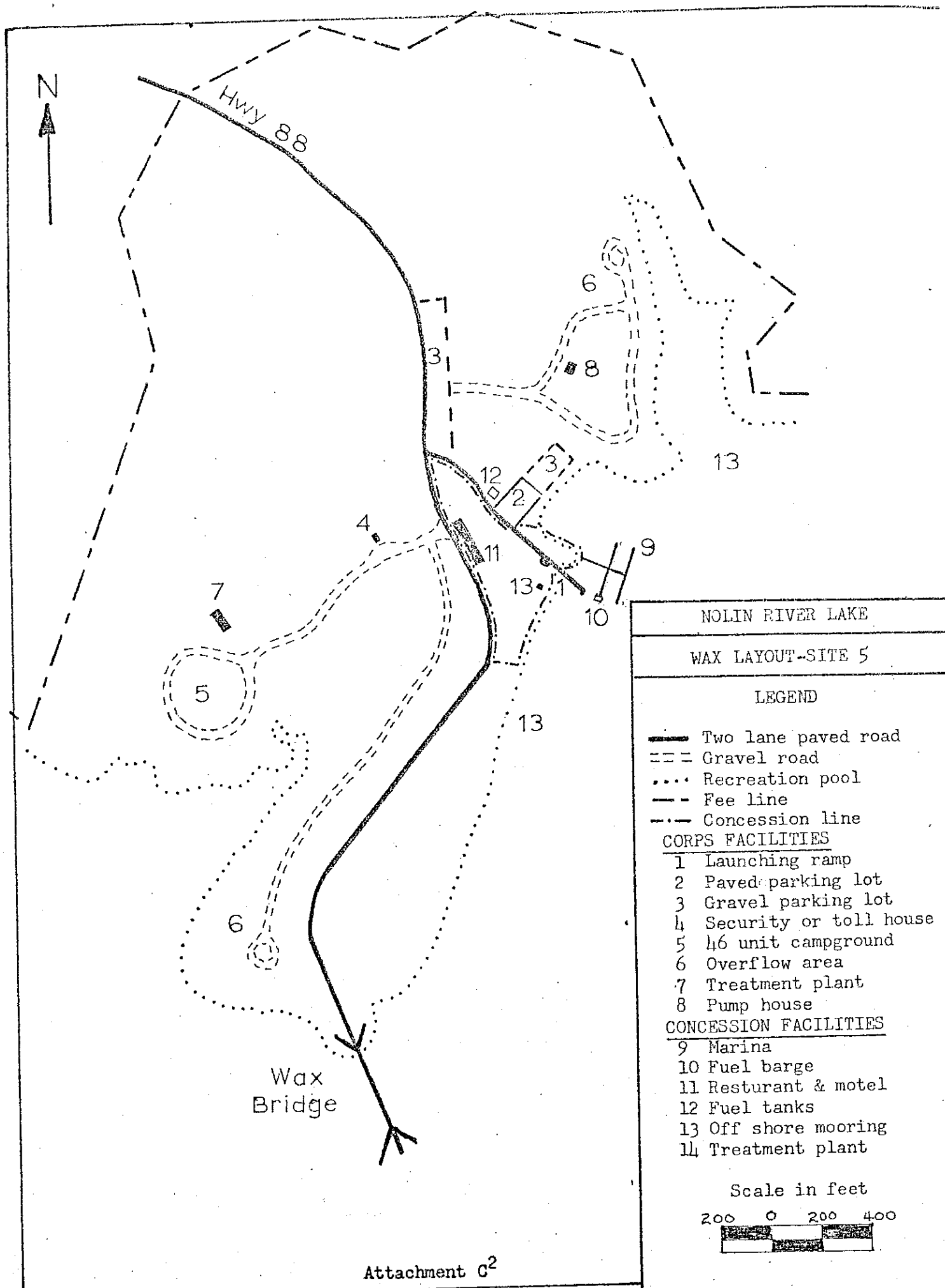
- Two lane hard top rd.
- - - Gravel rd.
- ..... Recreation pool
- - - Fee line

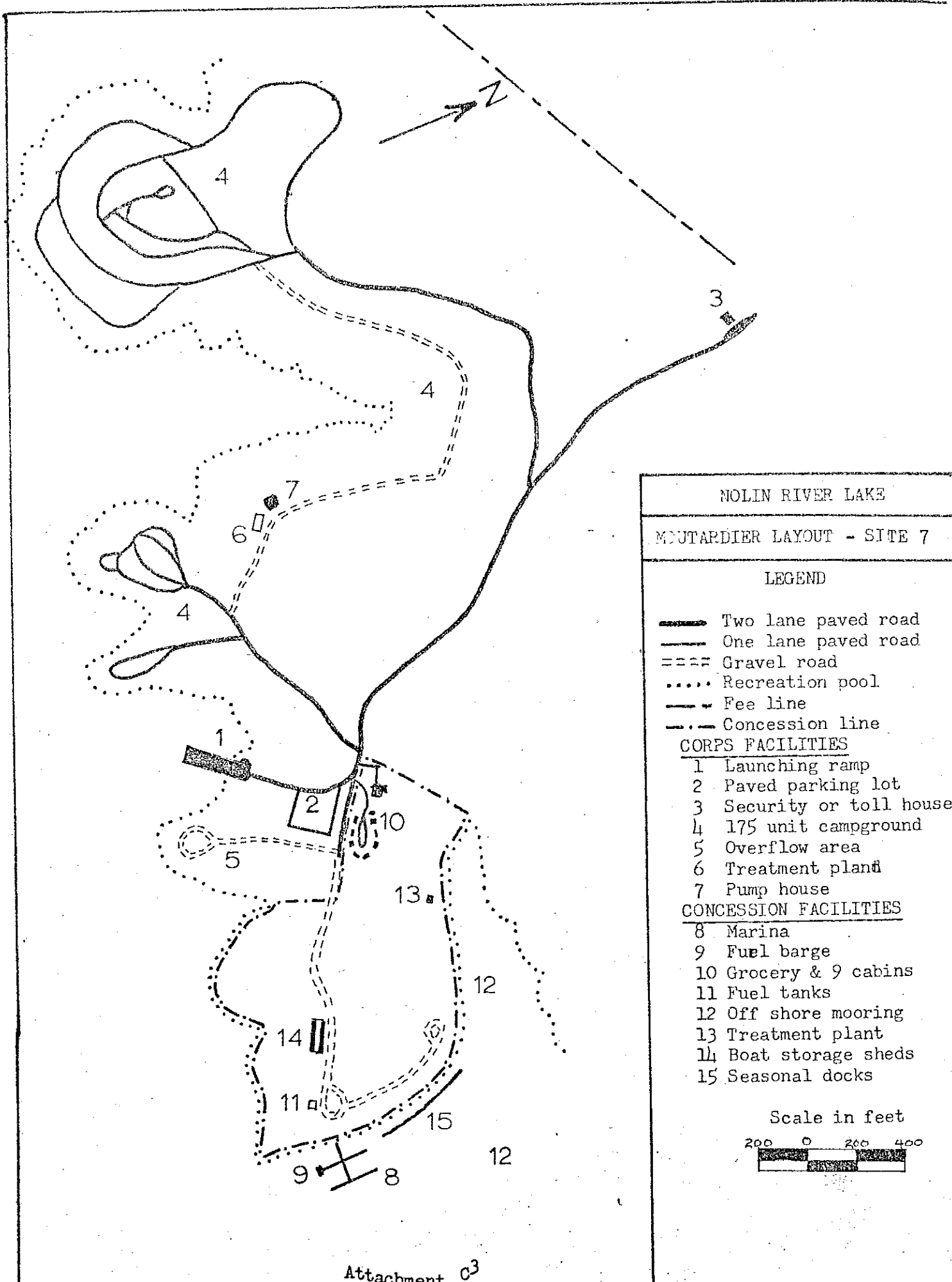
- 1 Launching ramp
- 2 Parking lot

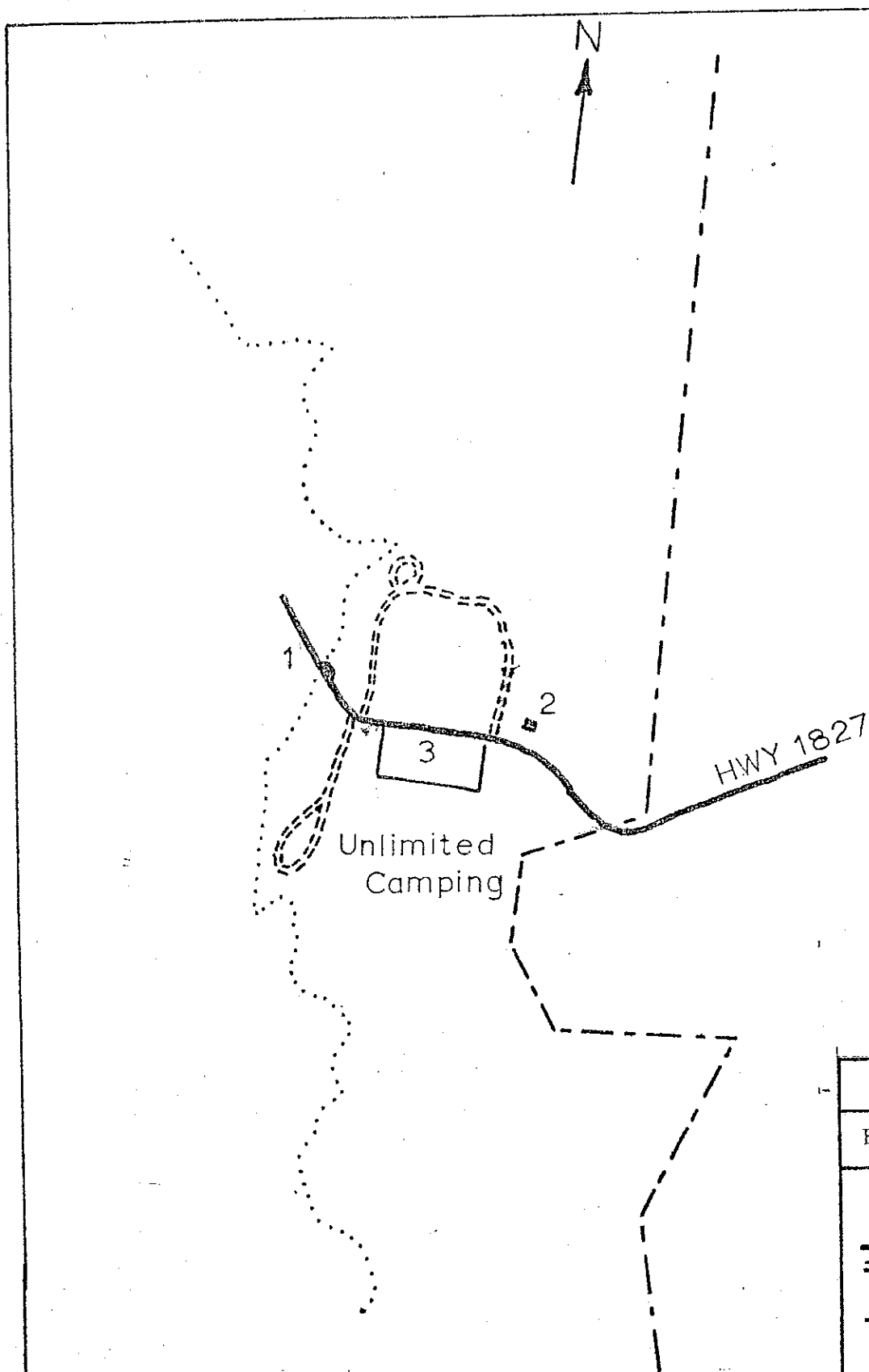
Scale in feet



Attachment C<sup>1</sup>







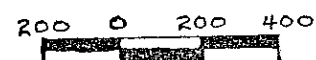
NOLIN RIVER LAKE

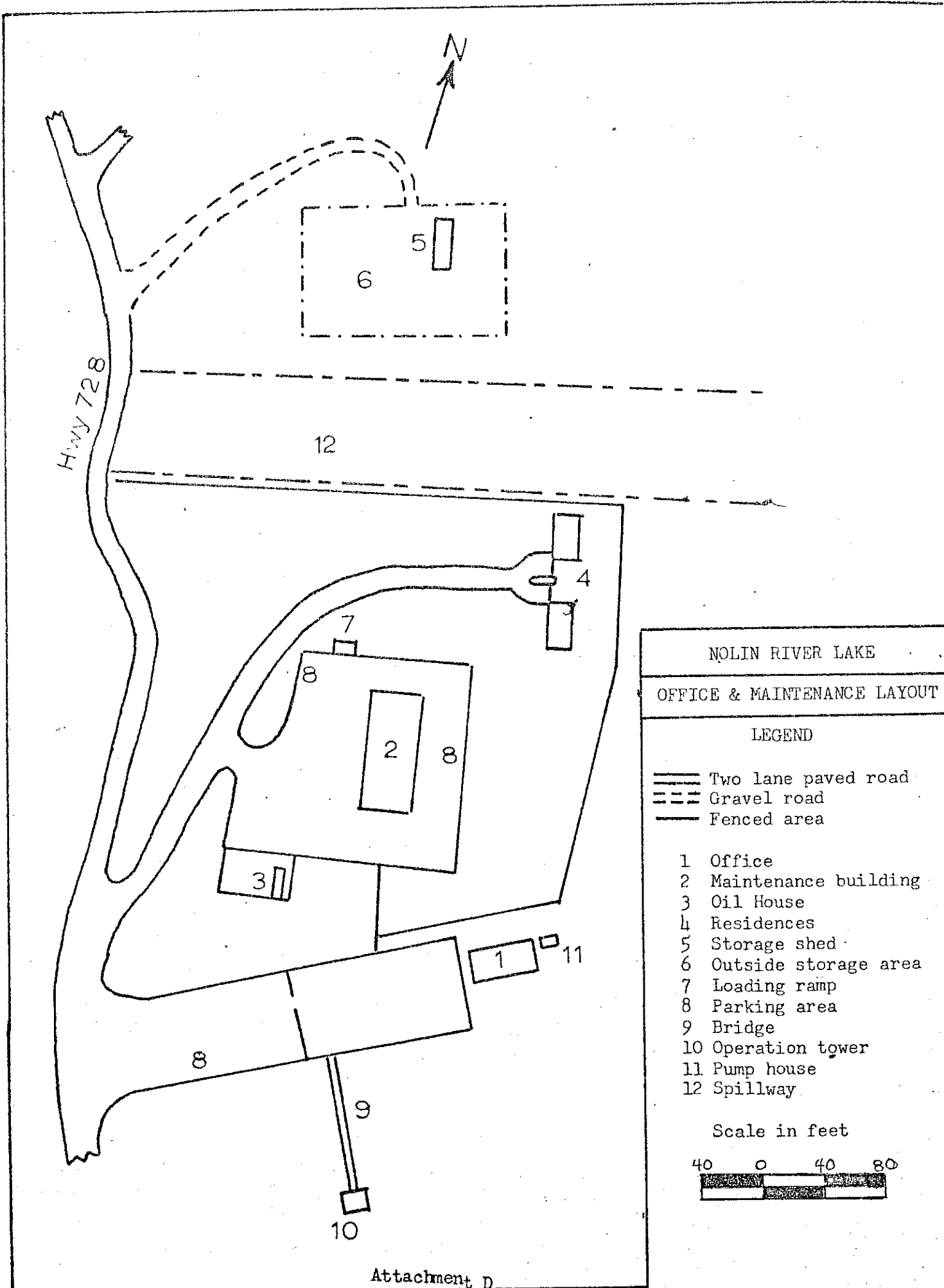
BRIER CREEK LAYOUT-SITE 8

LEGEND

- Two lane hard top rd.
- - - Gravel rd.
- ..... Recreation pool
- - - Fee line
- 1 Launching ramp
- 2 Pump house
- 3 Parking lot

Scale in feet





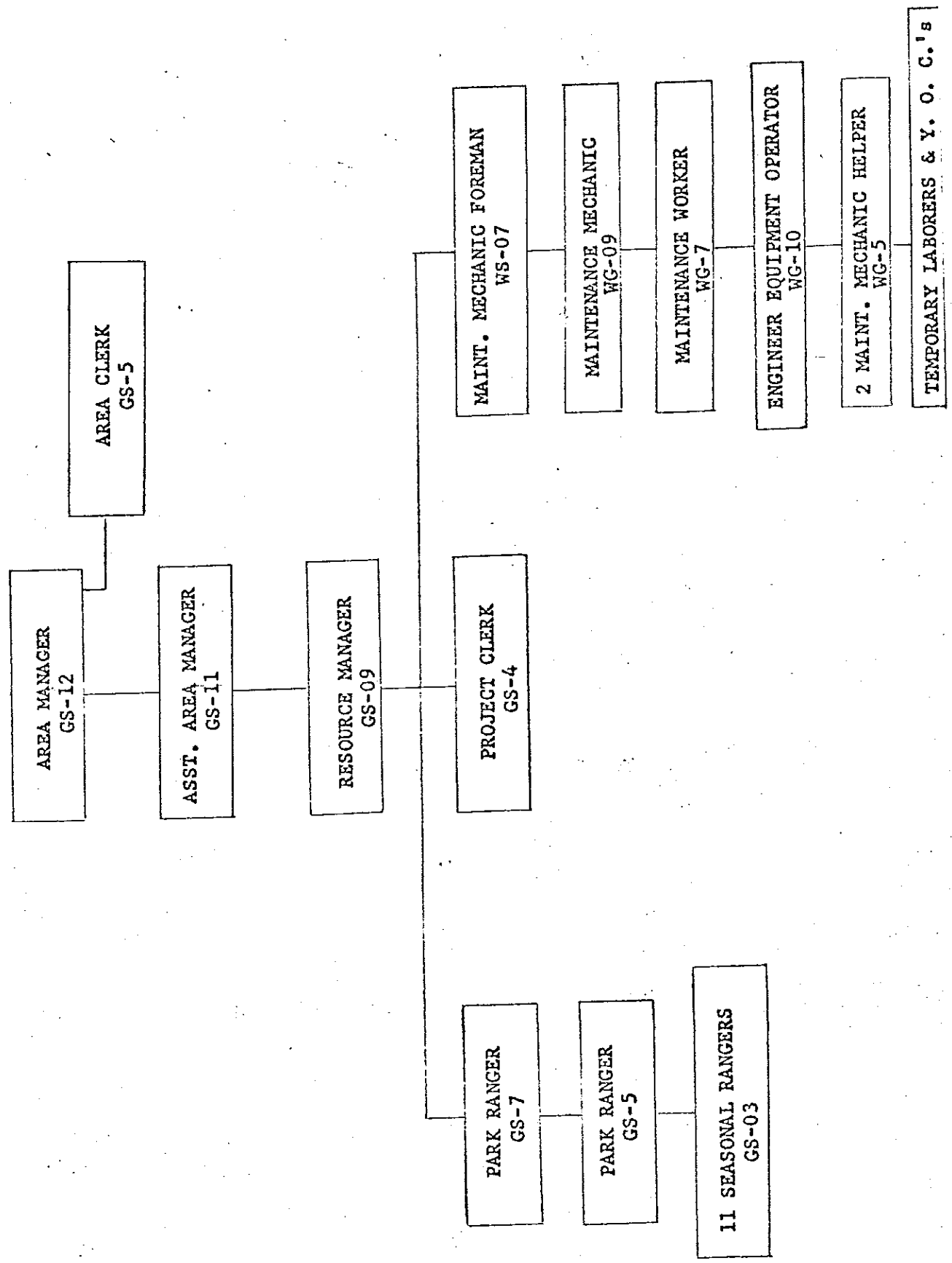
## MAJOR EQUIPMENT

NOLIN RIVER LAKE, KY.

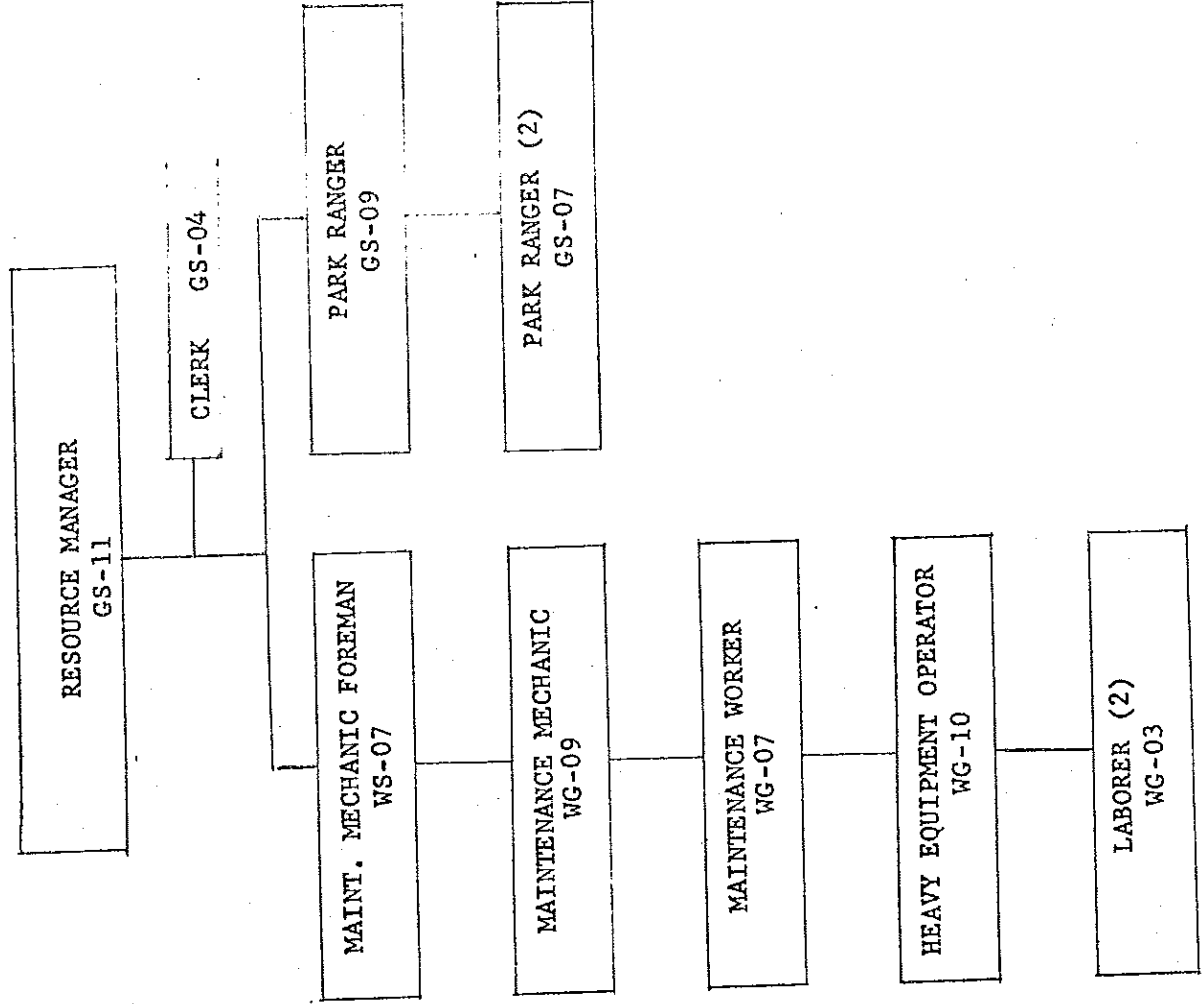
- 1 Backhoe
- 1 Row Boat
- 1 Aluminum Boat, 19'
- 1 Brush Chipper
- 2 Air Compressors
- 1 Radio, Remote Control
- 1 Electric Generator
- 1 Road Grader
- 1 Surveyor's Level
- 2 Tractor Loaders, Scoop Type
- 1 Concrete Mixer
- 1 Pontoon Float
- 18 Radios, Receiver & Transmitter
- 4 Tractors, Wheel Type
- 6 Gravel's
- 7 Trailers
- 1 Tree Stump Cutter
- 1 Electric Welder
- 1 Garbage Truck
- 3 Pick-up Trucks
- 3 Dump Trucks
- 1 Stake Body Truck
- 5 Chain Saws
- 1 Dozer, Model TD-9

NOLIN RIVER LAKE (Existing)

TABLE OF ORGANIZATION







### THIRD PARTY LEASES

1. Tract 2509-1, 2600, 2617, 2618, Mr. Clevie Clemons, 50 acres.
2. Tract 2605, 2614, and 2615, Mr. Lebart Gibson, 40 acres.
3. Tract 2612, Mr. Velmo Gibson, 8 acres.
4. Tract 4005, Mr. Ed Howe, 25 acres.
5. Tract 3812, Mr. Robert Meredith, 5 acres.
6. Tract 3807, and 3411, Mr. R.L. Smith and son, 40 acres.